



3

Nights

4

Days

Mathura !’ Vrindavan, Barsana, Govardhan , Gokul Ex - Mathura

Uttar Pradesh 3N: Mathura 1N | Vrindavan 1N | Mathura 1N |

Product Code: TS0170-M6XWL



Itinerary Details

Day 1: Arrival in Mathura - Exploring the Birthplace of Lord Krishna

Krishna Janmabhoomi Temple: Begin your spiritual journey at the birthplace of Lord Krishna, a sacred and important site in Mathura. Vishram Ghat: Take a boat ride on the Yamuna River and visit the ghat where Lord Krishna is believed to have rested after defeating Kansa. Lunch: Enjoy a traditional meal at a local restaurant in Mathura. Dwarkadhish Temple: Visit this famous temple, known for its beautiful architecture and spiritual significance. Potara Kund: Explore this sacred pond where Lord Krishna`s clothes were washed as a child. Overnight Stay: Mathura

Day 2: Mathura to Vrindavan

Morning Travel: Drive to Vrindavan (Approx. 20 minutes / 11 km). Banke Bihari Temple: Start the day with a visit to this vibrant and lively temple, one of the most important temples dedicated to Lord Krishna. Prem Mandir: Visit this beautifully crafted temple, known for its intricate designs and stunning lighting in the evening. ISKCON Temple: Enjoy the peaceful environment and devotional chants at this globally renowned temple. Lunch: Enjoy a sattvic meal at a local restaurant or ashram in Vrindavan. Nidhivan: Visit this mystical garden, associated with Lord Krishna’s Raas Leela. Overnight Stay: Vrindavan

Day 3: Vrindavan to Barsana and Goverdhan

Morning Travel: Drive to Barsana (Approx. 45 minutes / 40 km). Radha Rani Temple: Visit the hilltop temple dedicated to Radha, with panoramic views of Barsana. If you visit during Holi, you can see the famous Lathmar Holi. Travel to Govardhan (Approx. 45 minutes / 35 km). Govardhan Hill: Visit the sacred hill and perform the Govardhan Parikrama, either by foot or vehicle, depending on your preference. Govind Kund: Visit this sacred pond associated with Lord Krishna, located near Govardhan Hill. Overnight Stay: Govardhan or return to Mathura

Day 4: Govardhan to Gokul and Return to Mathura

As your visit comes to an end, we hope the memories of this place stay with you. Whether it was the stunning scenery, vibrant culture, or peaceful ambiance, may it inspire and uplift you. Wishing you a safe journey home, and we look forward to welcoming you back in the future.



Vehicle Details

- ✓ **A/c Vehicle**

✓ Toll & Parking Fee Included

✓ Non- Smoker & Non- Alcoholic Driver

✓ Ac Vehicle
- ✓ Vehicle Insurance

✓ Neat & Clean Vehicle

✓ 24*7 On Call Assistance

✓ Air Bags & Abs For Extra Safety
- ✓ Driver Allowance Included

✓ Well Experienced Driver

✓ Breakdown Services

Vehicle Features

- ✓ **A/c Vehicle**

✓ Toll & Parking Fee Included

✓ Non- Smoker & Non- Alcoholic Driver

✓ Ac Vehicle
- ✓ Vehicle Insurance

✓ Neat & Clean Vehicle

✓ 24*7 On Call Assistance

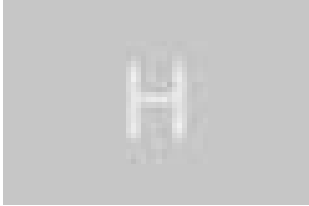
✓ Air Bags & Abs For Extra Safety
- ✓ Driver Allowance Included

✓ Well Experienced Driver

✓ Breakdown Services



Hotel Details

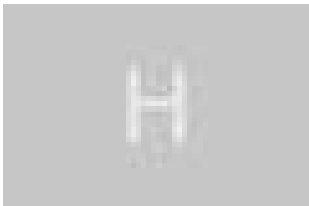


Hotel Brijwasi Royal
Deluxe - Breakfast

3 Star

Mathura

Night: 1

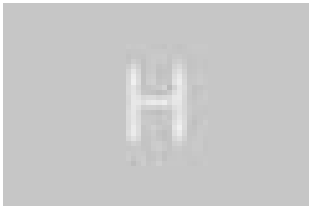


Resort Hare Krishna Orchid
Deluxe - Breakfast

5 Star

Vrindavan

Night: 1



Hotel Brijwasi Royal
Deluxe - Breakfast

3 Star

Mathura

Night: 1



Price Details

Check In:

26-09-2025

Check Out:

29-09-2025

Nights:

3

Adults

4

Child

1

✓ **Innova (6 Seater)**

- Room 1
- Room 2

Price Breakup		
Room 1: Double Sharing	INR 11960 * 2	INR 23920
Room 2: Double Sharing	INR 11960 * 2	INR 23920
Price Child 10 yr on Sharing	INR 1725 * 1	INR 1725
Total Package Price		INR 49565
GST @ 5%		INR 2,478.25
Gross Total		INR 52,043.25



Inclusions

- ✓ All transfers and sightseeing as mentioned in the itinerary.
- ✓ Neat and clean, air-conditioned vehicle at your disposal as per the itinerary.
- ✓ 24/7 Assistance: Round-the-clock support during the trip.
- ✓ Driver`s allowance, tolls, parking fees, interstate permits, and night halt charges.
- ✓ Fuel charges for the entire trip.
- ✓ Accommodation in a neat & clean hotel with selected meals.



Exclusions

- ✗ Airfares and train ticket charges (if applicable).
- ✗ Expense of personal nature such as tips, laundry, telephone, beverages, etc.
- ✗ Camera fees, Tour Guide, Attraction entry fees, upgrade, etc
- ✗ Any services not mentioned in the inclusions.